



SOUTH DAKOTA MINES
An engineering, science and technology university

University Cabinet

August 28, 2023





SOUTH
DAKOTA
MINES

Office of Student Engagement

The mission of the Office of Student Engagement is to enhance student development through educational, engaging, and entertaining programming that promotes leadership development, a commitment to service and a desire to learn.

Strategic Plan

List the top two initiatives, goals, or achievements (as applicable) for the department, center, or program.

Academic & Co-Curricular Excellence

- Rocker Ready Orientation
- Rocker Connections Weekend

Research & Innovation

- Not applicable

Outreach & Engagement

- Enhancing civic engagement and community service programming
- Provide opportunities for students to engage in the local community

Campus Culture

- Surbeck Center-Hub of Campus Life
- Enhance student activity programming on campus

Program Highlights

Rocker Ready Orientation

- We moved our online portion of the orientation to D2L
- Rebranded welcome week to Rocker Launch

Rocker Connections Programming (See Handout)

- Continuing to grow program, included transfer students
- Impacts on persistence and retention
- Additional Assessment Plan

Civic Engagement Programming

- Constitution Day Speaker
- Black Hills Talks
- Community Service

Surbeck Center

- Updates to space, Opportunity for All
- A hub for campus life

Program Highlights (continued)

Enhance Student Activity Offerings

- Looking into possible grant funding
- Late night programming
- Programming in the local community (Downtown, Outdoor Campus, Journey Museum)

Leadership Summit

- First cohort: Spring 2023 (included First-Year Mentors, Resident Assistants, and CAMP leaders)
- Future goal: expand to all student org leaders

Fraternity and Sorority Life

- New fraternity on campus



**SOUTH
DAKOTA
MINES**

Department of Materials and Metallurgical Engineering

Strategic Plan

List the top two initiatives, goals, or achievements (as applicable) for the department.

Academic & Co-Curricular Excellence

- Sustainable enrollment, Ceramic Engineering minor (target – 120 UG students)
- **Expand Art+Engineering (STEAM) co-curricular initiative (target – Phase 2)**

Research & Innovation

- Grow research effort in Minerals, Materials, and Manufacturing (target - \$300k/FTE)
- Support and lead collaborative research efforts (AMP, CAPE, NSF infrastructure building)

Outreach & Engagement

- Expand industrial partnerships through advisory board, design, and career fair (target – 100% industry projects)
- Begin fundraising for new Foundry Building (target \$1M industrial support)

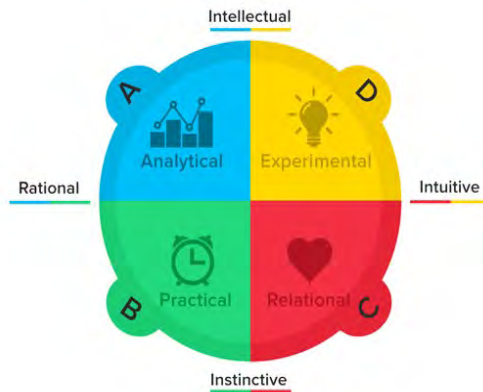
Campus Culture

- Strengthen diversity on campus (target – 1 NSF S-STEM on campus, 1 NSF REU Site)
- Continue to promote safety culture in labs and foundry co-curricular activities

NSF IUSE Art+Engineering (Year 2 update)

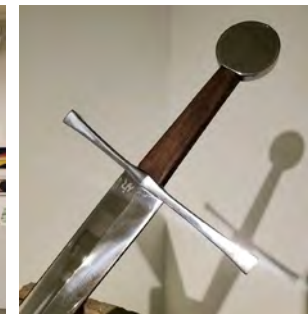
Curriculum

- Introduction of two new classes (MET 300 Ceramic proc, MET 400 Properties ceramics/glass)
- Creation of new modules in many laboratory classes (stained glass, metal clay, visualization)
 - Highlight Junior design – Black Hills Mineral Project
- Established Ceramic Engineering Minor



Co-Curricular

- Established glassblowing lab in the Foundry
- Established Art+Engineering Lab in MI Building
- Established American Foundry Society (casting club)
- Established Art+Engineering student competition and sponsored artists to conduct workshops



Outreach

- Created new Science of Pottery and Glass Summer Camp
- Piloted Art+Engineering Teacher Workshop
- Established Art+Engineering Fridays (supported students, faculty/staff, community)
- Elevate Rapid City Art+Engineering Mixer
- Re-established ties with the Rapid City Arts Council, Dahl Arts Center



Future

- Exploring industry fundraising for new Foundry facility (recent success with Day of Giving)
- Submit NSF IUSE Phase 2 proposal (\$1-2 Million)
- Explore city funding – Vision is to turn Foundry into community space to support local teachers, K-12 students, artists



**SOUTH
DAKOTA
MINES**

Monthly Reports

Enrollment Management

- We have a new regional admissions counselor in Minnesota, Lynn Gerebi.
- The application process for next academic year has already begun and admissions counselors are beginning their high school visits.

Academics

- Fifteen new faculty have joined South Dakota Mines for the 2023-2024 academic year.
- The Program Plan for a PhD in Chemistry and Biology underwent an external review this summer and received a positive report. Plan will now go to the BOR for approval.

Student Success

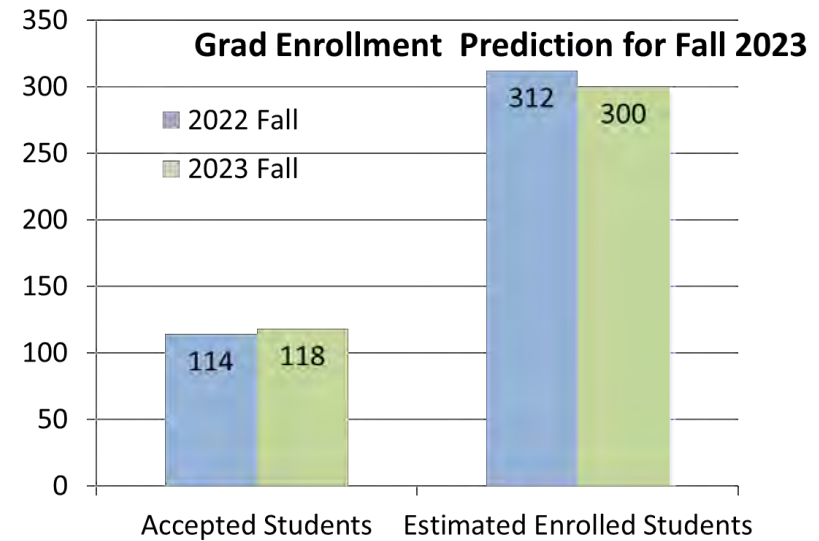
- Working with the EECS Department to pilot an advising model for first year students.
- The library saw a significant increase in the use of electronic databases:
 - Knovel usage doubled to more than 44,000 hits; Hoopla increased by 25%.
 - Interlibrary-loan borrowing has increased more than 47% and document delivery shows an 84% increase over the previous year.
 - Circulation of physical material increased by 100%.

Applications, acceptances, and registrations:

	Fall 2019	Fall 2020	Fall 2021	Fall 2022	Fall 2023
Applications	1,758	1,586	1,730	1,798	1,813
Acceptances	1,334	1,325	1,370	1,477	1,511
Registrations	477	455	502	543	503
Transfers (Spring)	N/A	N/A	N/A	N/A	N/A
Transfers (Fall)	N/A	N/A	70	75	72

August 2023

Current Accepted applications-potential enrolled	Fall 2023	Rounded 3-year average (2020-2022)	# change from 3 year aver	% change from 3 year average
Current accepted applications	118	111	7	6.3%
Campus MS	72	79	(7)	-8.9%
Distance MS	26	16	10	62.5%
PhD	20	15	5	33.3%
U.S. students	94	84	10	11.9%
International	24	27	(3)	-11.1%
Accelerated*	36	42	(6)	-14.3%



- Implemented streamlined admissions for nonthesis MS candidates
- Fall fair recruiting planned in SD, MT, ND, CO, WY, maybe UT
- Incentive tuition helped increase semester net graduate stipend by \$2,000 in FY23
- First Data Science and Engineering PhD graduated this summer

Upcoming season openers:

- Sept. 1 – volleyball at MSU Moorhead
- Sept. 1 – football vs. Valley City State
- Sept. 1 – men’s soccer at MSU Billings
- Sept. 2 – cross country at Wyoming
- Sept. 10 – men’s golf at Colorado Christian
- Sept. 18-19 – Hardrocker Invitational golf
- Sept. 24-26 – women’s golf at Westminster

Fall 2023 Intramural Sports



Sand Volleyball	Aug 29, 31 & Sept 7
Flag Football	Sept 19, 21, 26 & 28
COED Soccer	Oct 3, 5, 10 & 12
Spikeball	Oct 17 & 19
Laser Tag	Oct 24, 26 & Nov 2
3v3 Basketball	Nov 7, 9, 14 & 16
Cornhole	Nov 28, 30 & Dec 5



Recent Alumni Events

June

- Saturday, June 3 @ 6:00 PM – Denver Alumni Cooking Class (9 attended)
- Monday, June 5 @ 6:00 PM – Denver Senior Send-Off at HDR (11 Alumni attended)
- Thursday, June 8 @ 11:30 AM – Thirsty's Lunch (23 attended)
- Saturday, June 10 @ 5:30 PM CT – Twin Cities St. Paul Saints Game (77 attended)
- Sunday, June 11 @ Noon CT – Twin Cities Family Picnic (17 attended)
- Tuesday, June 13 @ 6:00 PM CT – Twin Cities Senior Send-off HDR (7 alumni attended)
- Thursday, June 15th @ 11:00 AM MT – Virtual Lunch & Learn KTEC (27 attended)
- Saturday, June 17 @ 1:00 PM – Rapid City Pub Crawl (33 attended)
- Saturday, June 24 @ 5:15 PM CT – Sioux Falls Canaries Game (16 attended)
- Tuesday, June 27 @ 6:00 PM CT – Sioux Falls Senior Send Off at Raven (7 alumni attended)
- Wednesday, June 28 @ 6:00 PM – Omaha Senior Send Off at HDR (15 alumni attended)

July

- Thursday, June 5 @ 11:00 AM MT – Virtual Lunch & Learn: ME Department (22 attended)
- Sunday, July 9 @ 2:00 PM – Spearfish Sasquatch Game (6 attended)
- Thursday, July @ 11:30 PM – Thirsty's Lunch (45 attended)
- Saturday, July 15 @ Noon – Rapid City Picnic at Canyon Lake (30 attended)
- Thursday, July 20 @ 11:00 AM MT – Virtual Lunch & Learn: Estate Planning (72 attended)
- Saturday, July 29 @ 7:20 PM – Atlanta Braves Game (16 attended)

Upcoming Alumni Events

August

- Thursday, August 10 @ 11:30 AM – Thursday lunch Thirsty's (45 attended)
- Monday, August 14 @ 6:30 PM – Gillette Alumni Happy Hour
- Tuesday, August 15 @ 6:00 PM – Sheridan Happy Hour
- Wednesday, August 16 @ 6:00 PM – Billings Alumni Dinner
- Thursday, August 17 @ 11:00 AM – Virtual Lunch & Learn SOTU
- Thursday, August 24 @ 6:00 PM – Hardrockers at Summer Nights

September

- Friday, September 1 @ 6:00 PM – FB Game vs Valley City State
- Saturday, September 9 – President's Ride
- Saturday, September 15 @ Noon – M-Hill Picnic
- Saturday, September 15 @ 6 PM – Alumni Awards Gala
- Saturday, September 16 @ 1:00 PM – Homecoming Game vs CO Mines
- Tuesday, September 26 @ 9:00 AM – Career Fair
- Saturday, September 30 @ 6:00 PM – BH Brawl in Spearfish

Student Events

August

- Thursday, August 17 @ 5:00 PM – Parent Wine & Cheese Reception
- Monday, August 21 @ 7:00 AM – Donuts with CARA
- Thursday, August 24 @ 10 AM – Student Org Fair
- Thursday, August 24 @ 6:00 PM – Hardrockers at Summer Nights

October

- Tuesday, October 3 @ 5:00 PM – Alumni & Student Bingo
- Tuesday, October 24 @ 6:00 PM MT – Online Trivia Night

November

- Tuesday, November 7 @ 5:00 PM – Alumni & Student Bingo
- Tuesday, November 28 @ 10:00 AM – Cap & Gown

December

- Friday, December 1 @ 5:30 PM – New Alumni Welcome Reception

2023 Alumni Awards

Congratulations to this year's alumni award winners! Join us on **Friday, September 15** for the **Hardrock Heritage Gala at 6:00 pm** where they will be recognized.

Outstanding Recent Graduates

Brett Carlson (MET 2013)

William G. Eldridge (GeolE 15)

Erin McCoulough (MinE 14)

Rachel Pekarek (CSC 13)

Eirik Valseth (ME 15)

Distinguished Alumni Awards

Dave Berg (ME 73)

Julie Carver (GeolE 86)

Jack Hazel (ChE 85)

Dean Schauer (MET 89)

Roderick Sowders (ME 86)

March Medal Award

David Braun (ME 61)

Full Rocker Days Alumni schedule at: <https://cara.sdsmt.edu/rockerdays>

FY23 Annual Goals

Category	FY 22 Actuals	FY 23 Goals	FY 22 Actuals thru 6/30/22	FY 23 Actuals thru 6/30/23
New Gifts and Pledges:				
• Cash	\$ 12.76M		\$ 12.76M	\$ 9.43M
• Stock	\$ 1.57M		\$ 1.57M	\$ 1.26M
• Pledges	<u>\$ 6.53M</u>		<u>\$ 6.53M</u>	<u>\$ 10.36M</u>
Total New Money	<u>\$ 20.86M</u>	<u>\$20.00M</u>	<u>\$ 20.86M</u>	<u>\$ 21.05M</u>
• Gifts In Kind	\$ 105.27M		\$ 105.27M	\$ 42.92K
• Estimated Heritage Society Gifts	\$ 12.43M		\$ 12.43M	\$ 2.89M
• Pledge Payments	\$1.35M		\$ 1.35M	\$ 4.94M

FY23 Breakdown of Gifts (cash, stock & new pledges)

Area	As of 6/30/23
Scholarships	\$8,001,813
Department Support	\$5,528,009
Athletics	\$525,914
Faculty Support	\$470,029
Facilities	\$5,195,233
Mines Advancement Fund	\$843,705
CARA Endowment Fund	\$490,060
Total	\$21,054,763

FY24 Annual Goals

Category	FY 23 Actuals	FY 24 Goals	FY 23 Actuals thru 7/31/22	FY 24 Actuals thru 7/31/23
New Gifts and Pledges:				
• Cash	\$ 9.43 M		\$ 611 K	\$ 0.39 M
• Stock	\$ 1.26 M		\$ 0 K	\$ 0.00 M
• Pledges	<u>\$ 10.36 M</u>		<u>\$ 42 K</u>	<u>\$ 1.41 M</u>
Total New Money	<u>\$ 21.05 M</u>	<u>\$18.00M</u>	<u>\$ 653 K</u>	<u>\$ 1.80 M</u>
• Gifts In Kind	\$ 43 K		\$ 0 K	\$ 0 K
• Estimated Heritage Society Gifts	\$ 2.89 M		\$ 0 K	\$ 0 K
• Pledge Payments	\$4.94 M		\$ 104 K	\$ 105 K

Traditions of Excellence Awardees

- May – Brittany Hunter
- June – John Vanwell
- July – Alana Wells
- August – tbd
- Nominations being accepted for September

CSA Meetings

- Aug. 24
- Nov. 16

2023-2024 Council Members

Angela Mettler, CSA Chair

- *May 2024*

Shelly Tupper, Vice Chair

- *May 2025*

Anita Brenneman, Secretary

- *May 2024*

Amber Anderson, Council Member

- *May 2025*

Jenn Dusek, Council Member

- *May 2024*

First meeting will be September 14th

On the horizon:

- Final tweaks to NTT Advisory Committee guidelines. Hope to form committee early in the fall.
- Work with Roger, Lance, and Laurie on Research Faculty Guidelines
- Work with Roger and Lance to approve university wide Peer Review of Teaching Guidelines
- Elect required department level P&T committees
- Increment weather policy
- Help Darcy with HLC needs
- Work with Lori Groven to facilitate town hall discussions with faculty regarding P&T dossier guidelines

FY24 Operating Budget Process

- January 2023 – FY24 Budget Guidance Memo sent to all departments
- February 2023 – Departments presented their budgets to Budget Review Team
- March to June 2023 – Budget projections developed
 - Revenues
 - Tuition and Fee Revenues based on flat enrollment
 - State Funding
 - General Sales and Services
 - Research F&A
 - Auxiliaries
 - Expenses
 - Personnel Services
 - Operating
- July 2023 – Budget Decision
 - 7% Salary policy and health increase
 - Continue 10% OE cut
 - Redistribution of UG student labor based on need
 - Revisit after Census Date

EHS Training Opportunities

General Hazard Communication and Lab Safety

- August 22nd, in CBEC 2228 at 5 pm MST
- August 31st in CBEC 2228 at 5 pm MST
- September 18th in CBEC 2228 at 5pm MST

Storeroom Procedures

- August 29th in CBEC 2228 at 5 pm MST
- September 21st in CBEC 2228 at 5 pm MST

Hazardous Waste Procedures

- August 28th in CBEC 2228 at 5 pm MST
- September 5th in CBEC 2228 at 5 pm MST

BioSafety

- August 24th in CBEC 2228 at 5 pm MST
- September 7th in CBEC 2228 at 5 pm MST
- September 19th in CBEC 2228 at 5pm MST

Campus Alert - Everbridge

New Mobile App

1. Register



2. Download Mobile App



HR Transformation

- The SD Board of Regents SB55 Task Force recommended a review of human resources (HR) functions to identify HR efficiencies achievable through implementation of technology and/or consolidation of functions through shared services centers or through centralization under the central office.

Areas being reviewed:

1. HR Organizational Structure
2. Strategic Vision
3. Classification & Compensation
4. Training & Development
5. Recruitment & Retention
6. Standardization of Processes and Implementation of Best Practices
7. Evaluation of Existing Shared Centers
8. Update of Review of Functions

New South Dakota Mines Human Resources Structure

South Dakota Mines and BHSU HR office collaboration

- Melissa Hart, Director of Human Resources (South Dakota Mines & BHSU)
- Dawn Weiss, HR Manager (South Dakota Mines)
- Nancy Feiler, BOR HR Generalist II (South Dakota Mines)
- Tammy Merkwan, BOR HR Generalist I (South Dakota Mines)
- Amber Anderson, BOR HR Generalist I (South Dakota Mines)
- Cassie Maser, HR Manager (BHSU)
- Ruth Moore, BOR HR Generalist I (BHSU)

Melissa will have oversight over both campus HR operations. All other employees in both HR offices will primarily service their original campus, however each person will be the point person on some functions for both campuses.

- **Software Development**

- Summer maintenance on the checklist, scheduling and parking applications
- Set up access for new faculty
- Provided financial reports for end of year and beginning of year

- **Networking & Security**

- Core switch firmware and OS updates
- Preparing for firewall upgrade for the campus
- Updated door readers in Placer, HP, and Connolly
- Finished VoIP project
- Updated wireless access points
 - Library, Surbeck, CivMech, EEP, CBEC, McLaury, King Center, O'Harra
- Added 14 additional outdoor security cameras around campus

- **Helpdesk/Classroom Support**

- Received 375 new Lenovo laptops and prepped for student handout
 - Electronic recycling completed in June
 - Serviced machines returned at the end of Spring semester
-

Social Media (YoY comparison):

- Total Impressions: 1.01 mil
- Total Engagements: 92,853
- Total Post Link Clicks: 27,591
- Video Views: 52,241
- Monthly Engagement Rate: 9.1%

Top Social Media Post:

Graduation post on Instagram – 666 likes. Most liked post on Instagram ever.



Traditional Media:

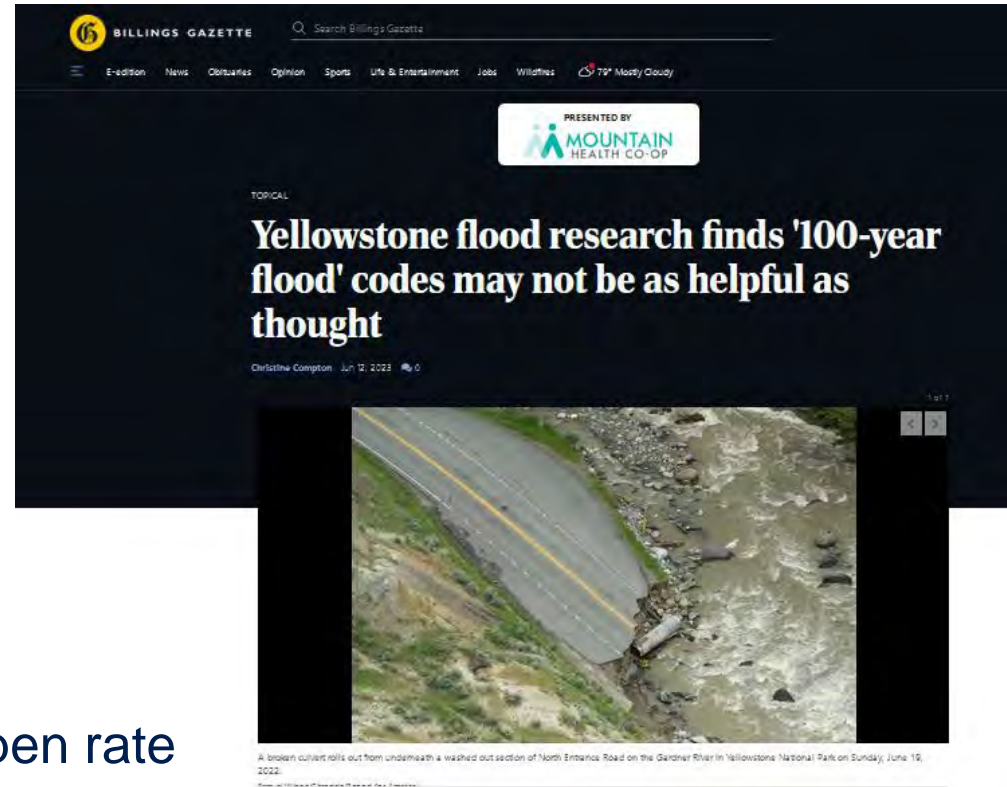
Mines research on the Yellowstone Flood was carried widely by outlets across Montana and the region

Mailchimp:

Monthly @ Mines: 22.1% open rate

President's Letter: 53.2% open rate

The Forefront: 26.4% open rate



Changes and Updates:

- NFE Council:
 - Changes of Roles:
 - Chair: Chris Roman – Office of Student Success
 - Secretary: Grisel Fox - Admissions
 - New members:
 - Cedric Collinge – Office for Inclusion
 - Nathan Williams – Residence Life

New NFE Staff:

- Gage Rayman: Assistant Cross County, Track & Field

NFE of the Month (July):

- Brittani Webb: Admissions

- Sept. 1** **Football Home Opener**
- Sept. 9** **President's Ride**
- Sept. 14-16** **Rocker Days**
- Sept. 15** **M Day & Hardrocker Heritage Awards**
- Sept. 20-21** **President's Leadership Academy
(first speaker)**
- Oct. 13** **President's Dinner**
***also April 12 – Sioux Falls**
- Dec. 2 & 3** **Holiday Concerts at Cathedral**
- Dec. 16** **Fall Commencement**



SOUTH DAKOTA MINES

2023-2028 Strategic Plan Pillars

Academic &
Co-Curricular
Excellence

Campus
Culture

Promotion &
Advancement

Enrollment &
Success

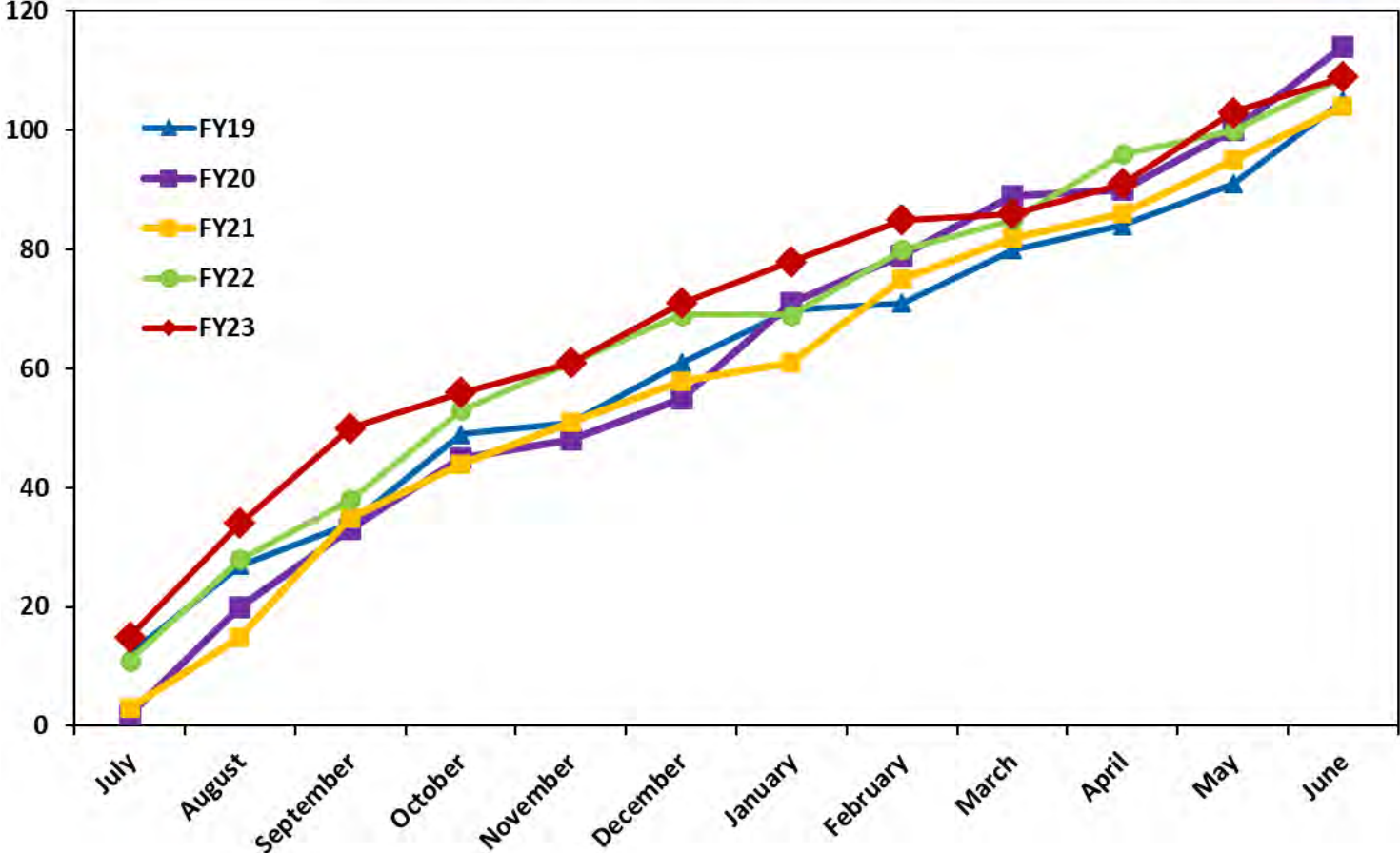
Research &
Innovation

Educate

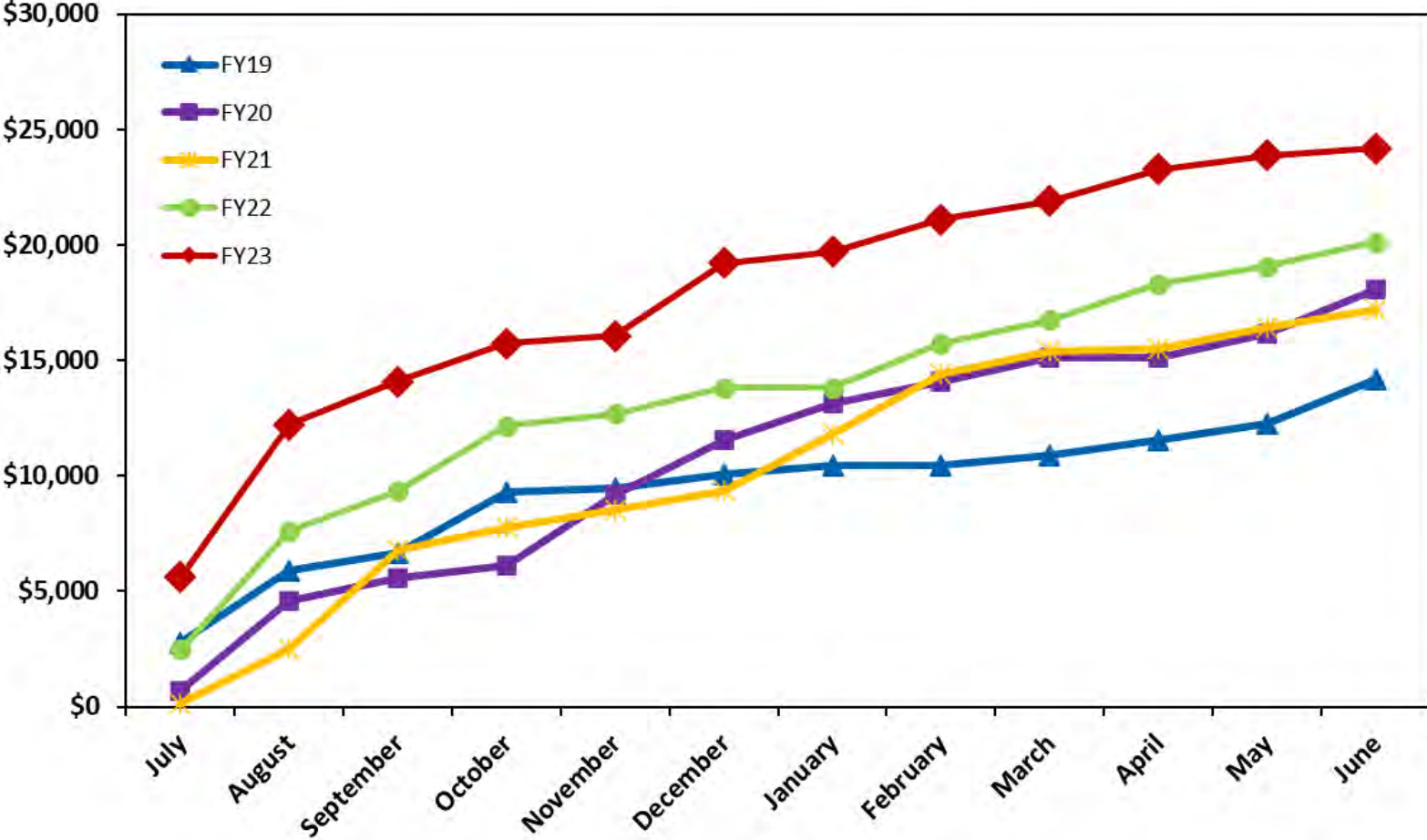
Innovate

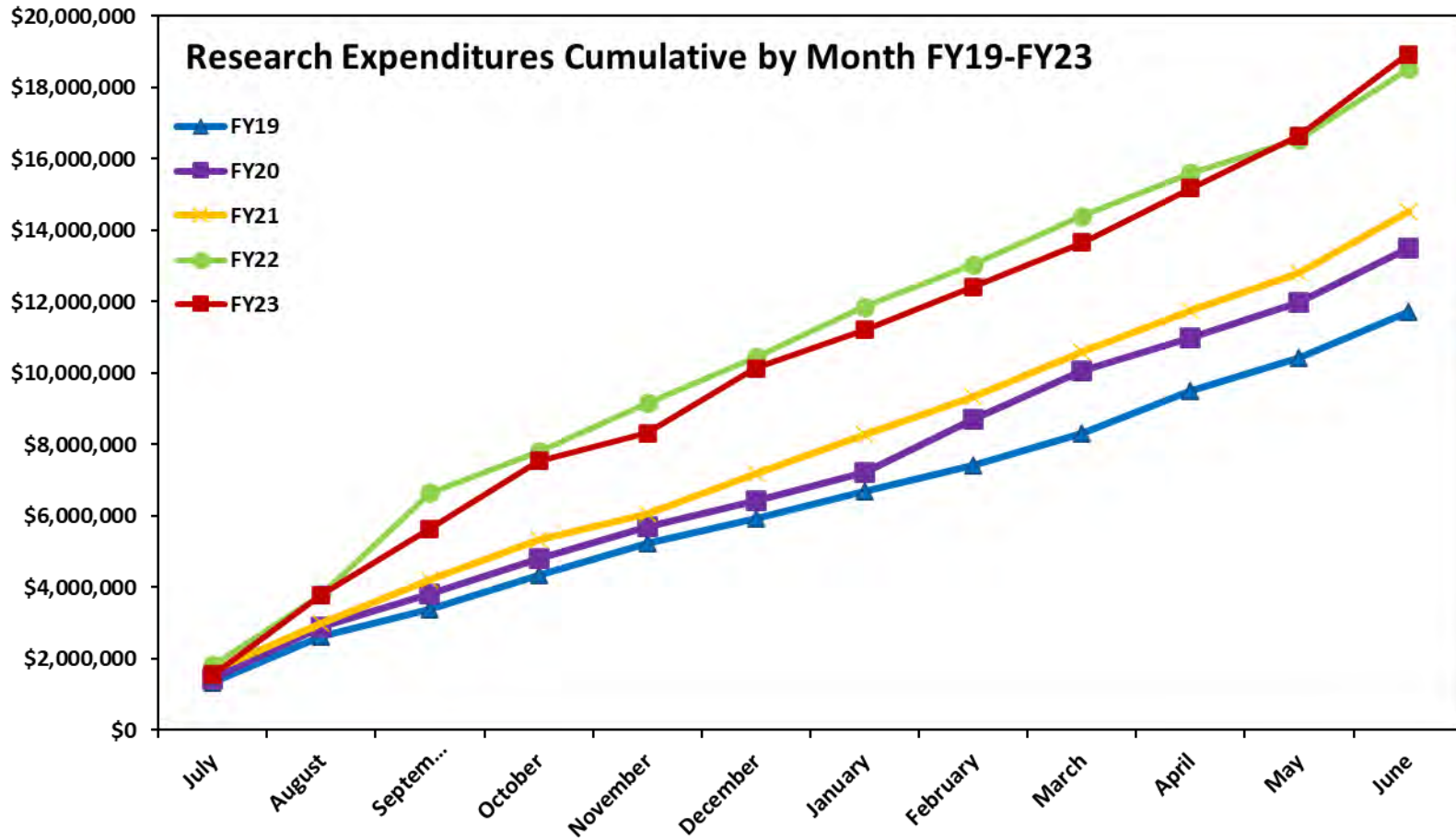
Engage

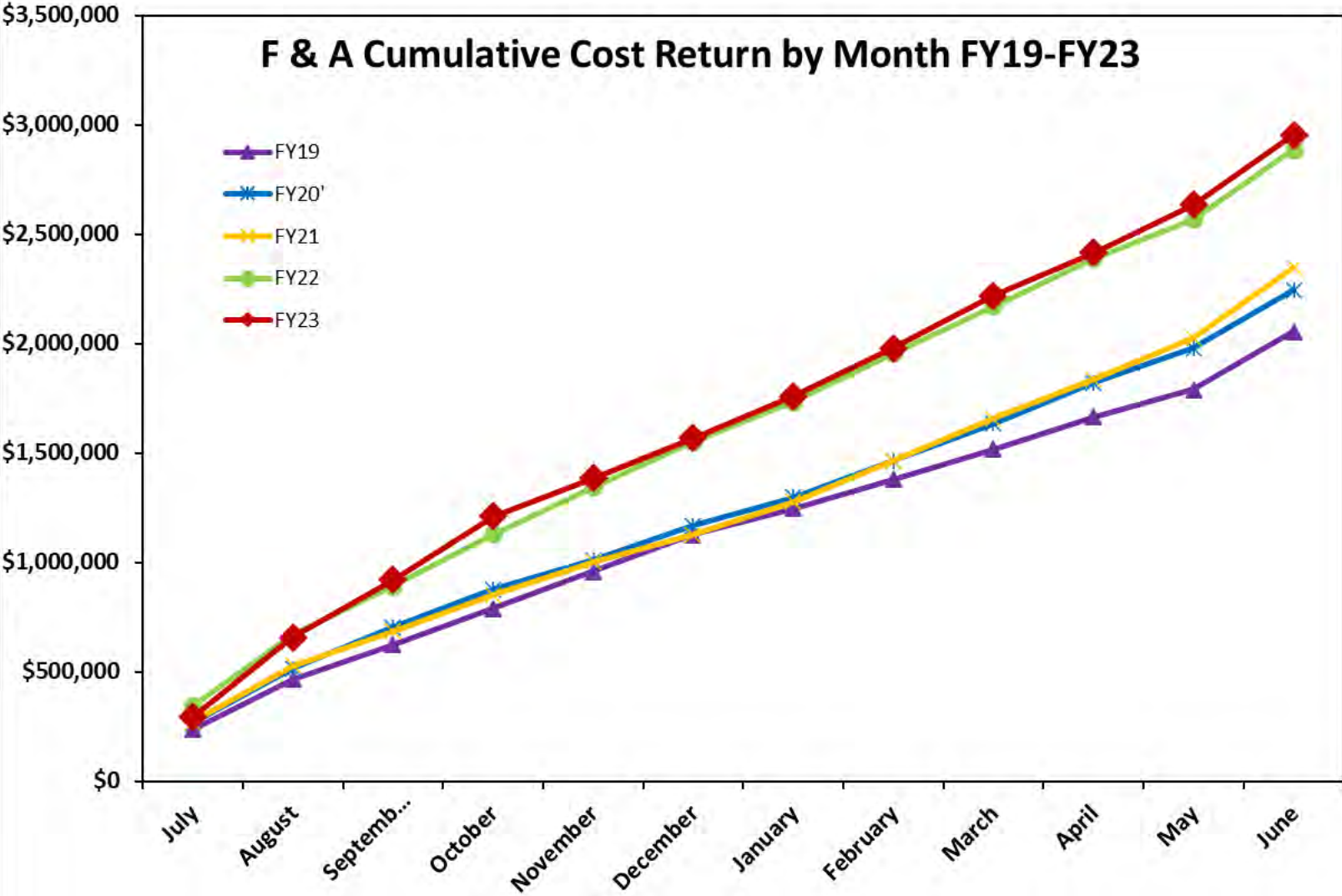
Cumulative Number of Awards by Month FY19-FY23



Cumulative Value of Awards (\$ K) by Month FY19-FY23







Student Association

- **One focus area for this year will be GAF**
- **Freshmen elections will be September 27**

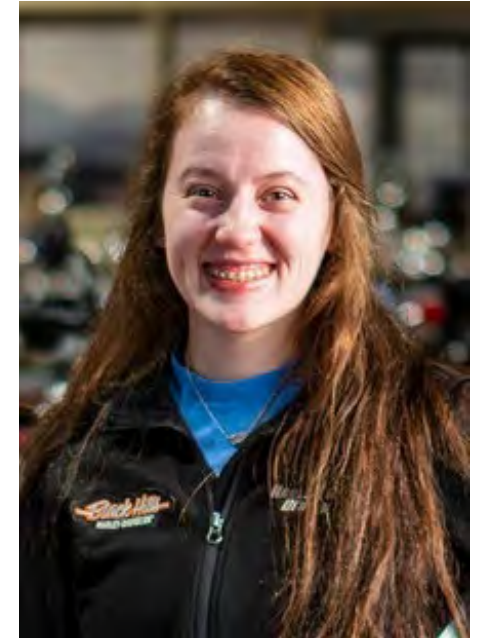
Student Development

Personnel Updates:

- **Area Coordinator in Palmerton/Connolly will be reposted in October**
- **Student Development Graduate Intern for fall semester - Madi Fuegen**

Swipe Out Hunger Program:

- **1,550 Meal swipes to be donated**
- **Pot and Pan Sets for all Residence Hall Community Kitchens**
- **Healthy Snacks Available in All High Traffic Offices**
- **Food Pantry Available in Upper Surbeck**



Upcoming Events

- 8/29 - Student Org Workshop
- 8/29 - Root Beer Kegger
- 8/30 - Mocktails and Safe Rides Programming
- 8/31 - Secrets of Personal Finance Program
- 9/6 - Drunk Goggles Program
- 9/9 - M-Hill Clean Up & Senior Pick
- 9/10 - Senior/Frosh Picnic
- 9/11 - Introduction of Homecoming Candidates
- 9/12 - Free Armadillos Ice Cream
- 9/14 - Protecting Yourself from Scams Program
- 9/15 - M-Hill Day and Picnic
- 9/16 - Basic Self Defense Class
- 9/20 - Suicide Prevention Walk
- 9/21- Blitz Chess Tournament