

KEY

- EXISTING BUILDINGS
- PROPOSED NEW BUILDINGS
- CIRCULATION BUILDING THROUGH
- PROPOSED GREEN SPACE
- PROPOSED PARKING SURFACE
- DOUBLE SIDED PARKING
- PEDESTRIAN PATH
- UTILITY TUNNEL
- TURBINE TRAIL
- P PARKING
- D DROP OFF

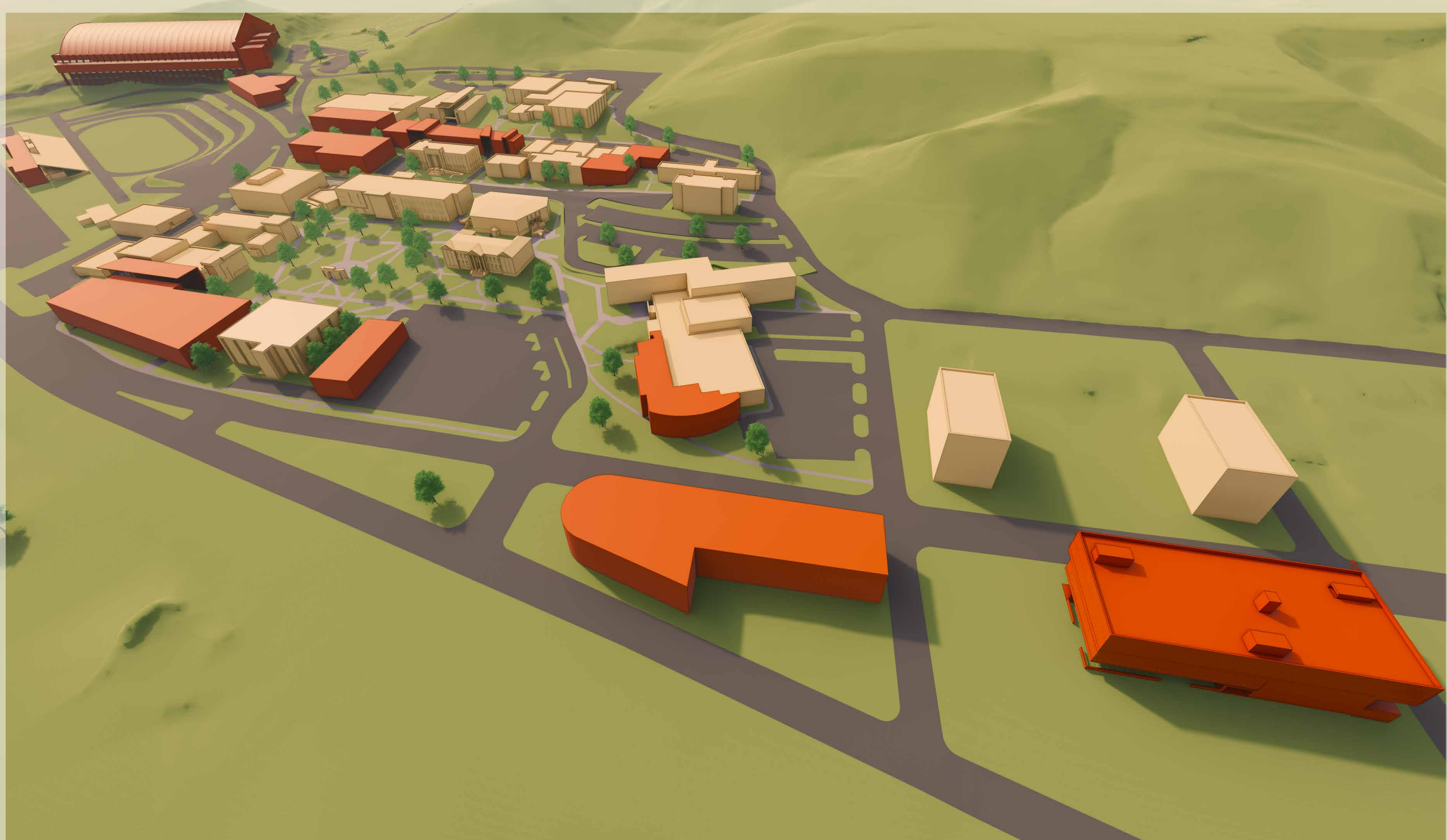
NOTE: GRUBBY STATUE TO BE RELOCATED AROUND MCLAURY AND QUAD AREA

1/2 MILE DIAMETER (10-15 MIN. WALKING)

POTENTIAL BAJA TRACK & MINING & MUCKING FIELD

1/2 MILE DIAMETER (10-15 MIN. WALKING)

Scale 1:200



SOUTH DAKOTA MINES CAMPUS MASTER PLAN



SOUTH DAKOTA MINES

UPDATE

2023

STRANG ARCHITECTS | CO-OP ARCHITECTURE | FMG ENGINEERING | TERRASITE | WEST PLAINS ENGINEERING

GUIDING PRINCIPLES

- World Class, Innovative, Engineering and Science School with a great reputation and connections around the world
- Small community of hard-working problem solvers with strong connections between students and faculty
- Provide top-notch research facilities that showcase the world-class work going on inside
- Strengthen ties to the community by encouraging growth to the northwest, towards Downtown Rapid City and the the developing Innovation District East of East Blvd.
- Preserve the history and traditions of the campus while also clearly conveying the values and aesthetic of an innovative, future-focused technology school.
- Focus academics within the existing campus core; build on and expand the synergies that are already established

DESIGN STRATEGIES

- Design for the Tour
- Define the Gateway/Front Door
- Provide One-Stop Shops
- Put Science on Display
- Engage the City
- Reinforce the Values of the Campus Community

LANDSCAPE AND THE PUBLIC REALM

- Develop uniform landscape standards for the campus
 - Lighting
 - Signage
 - Site Furnishings
- Improve accessibility campus-wide
- Utilize environmental design standards shown to reduce crime and increase public safety
- Develop a vibrant streetscape
- Provide green infrastructure on campus that can be used as a living classroom of environmental design strategies
- Work with fairgrounds to encourage joint-use of facilities, athletic fields, and parking
- Strengthen connections to existing City bike/pedestrian paths

KEY PROJECTS

NEAR-TERM PROJECTS - NEXT 10 YEARS

- **Upgrade Campus Electrical Service**
The electrical service for campus is at capacity and needs to be upgraded to facilitate any new buildings on campus.
- **Devereaux Library - Phase 1 (COMPLETED 2022)**
Renovate library to improve access to student services, with an emphasis on academic services and flexible + varied study spaces.
- **Research Expansion - Phase 1 (COMPLETED 2022)**
Acquire existing Ascent Innovation facility to relocate research labs on campus.
- **Mineral Industries (PROJECTED COMPLETION 2024)**
Relocate mineral industries programs to a new building. Due to constraints and inflation, building was moved to location F instead of A, J, or K in original plan.
- **Surbeck Center Expansion [C]**
Expand Surbeck Center to improve access to student services with an emphasis on services that build community and enhance student life.
- **Future Expansion [B, L]**
Expand CAMP program work areas with a new building (B) or add to the existing Civil and Mechanical Engineering Building to retain synergies with campus machine shop.
- **King Center Parking Lot [P.4]**
Relocate throwing fields to double parking at King Center.
- **Surbeck Center Drop-Off [P.2]**
Rework parking lot and drive aisles to develop a safer and more functional drop-off for Surbeck Center. Relocate Grubby statue to more prominent area with input from donor. March/Dake Plaza plaques will be moved to a location within the new parking area.
- **Surbeck Center Parking Lot [P.1]**
Rework parking lot to create a more appealing front-door for the campus. Relocate stalls to new Surbeck Center Drop-off.

- **Research Expansion [II] - Phase 2**
Expand Research facilities by adding on to existing Ascent Innovation facility.
 - **One-Stop Shop - O'Harra**
Relocate Registrar, Financial Aid, and Cashier's Office to one convenient location.
 - **Grandstand Improvements**
Upgrade existing grandstand.
 - **Gap Parking [P.6]**
Provide parking in the gap, southeast of campus. Plan for relocation of Baja track and Mining and Mucking Field.
- ### LONG TERM PLAN - BEYOND 10 YEARS, OR AS FUNDS BECOME AVAILABLE
- **Academic Program Expansion [A, E]**
Plan for expansion of existing Chemical and Biological Engineering Building due to addition of new biomedical engineering program or for a new academic building.
 - **Event Center/Field House [M]**
Provide an indoor track to increase competitiveness and host collegiate and public events.
 - **Music Building/Auditorium [J, D]**
Provide space for student performances as well as guest speakers and campus/community events.
 - **Loop Road Extension**
Extend Loop Road on the east side of campus to St. Joseph via the uppermost ramp.
 - **Traffic Improvements on St. Joseph**
Work with City to provide safer pedestrian experience on St. Joseph Street.

*Estimated costs within report were completed in 2019.

PEDESTRIAN AND BICYCLE CIRCULATION

- Rework pedestrian routes to reinforce major axes through the campus
- Locate bike-share in a prominent place on campus to encourage use
- Improve connections to City bike paths
- Provide contiguous interior/exterior transition spaces that cut through buildings along major public thoroughfares
- Create waypoints of visual interest that reinforce the aesthetic of a tech school
- Provide pedestrian-scale design elements that create a positive sense of campus community along St. Joseph Street

VEHICULAR CIRCULATION AND PARKING

- Reevaluate the role of the vehicle in campus life
- Prioritize strategies that reconfigure vehicular circulation around the perimeter of campus
- Redistribute parking to the perimeter of campus to reinforce pedestrian spaces
- Increase safety by creating clearly defined crosswalks and vehicular lanes
- Vacate Birch Street to improve access to campus via Kansas City Street
- Create Gateways on St. Joseph Street to establish campus community
- Work with the City to create a safer and more pedestrian-friendly streetscape by increasing parking and calming traffic on St Joseph Street



SOUTH DAKOTA MINES CAMPUS MASTER PLAN



SOUTH DAKOTA MINES

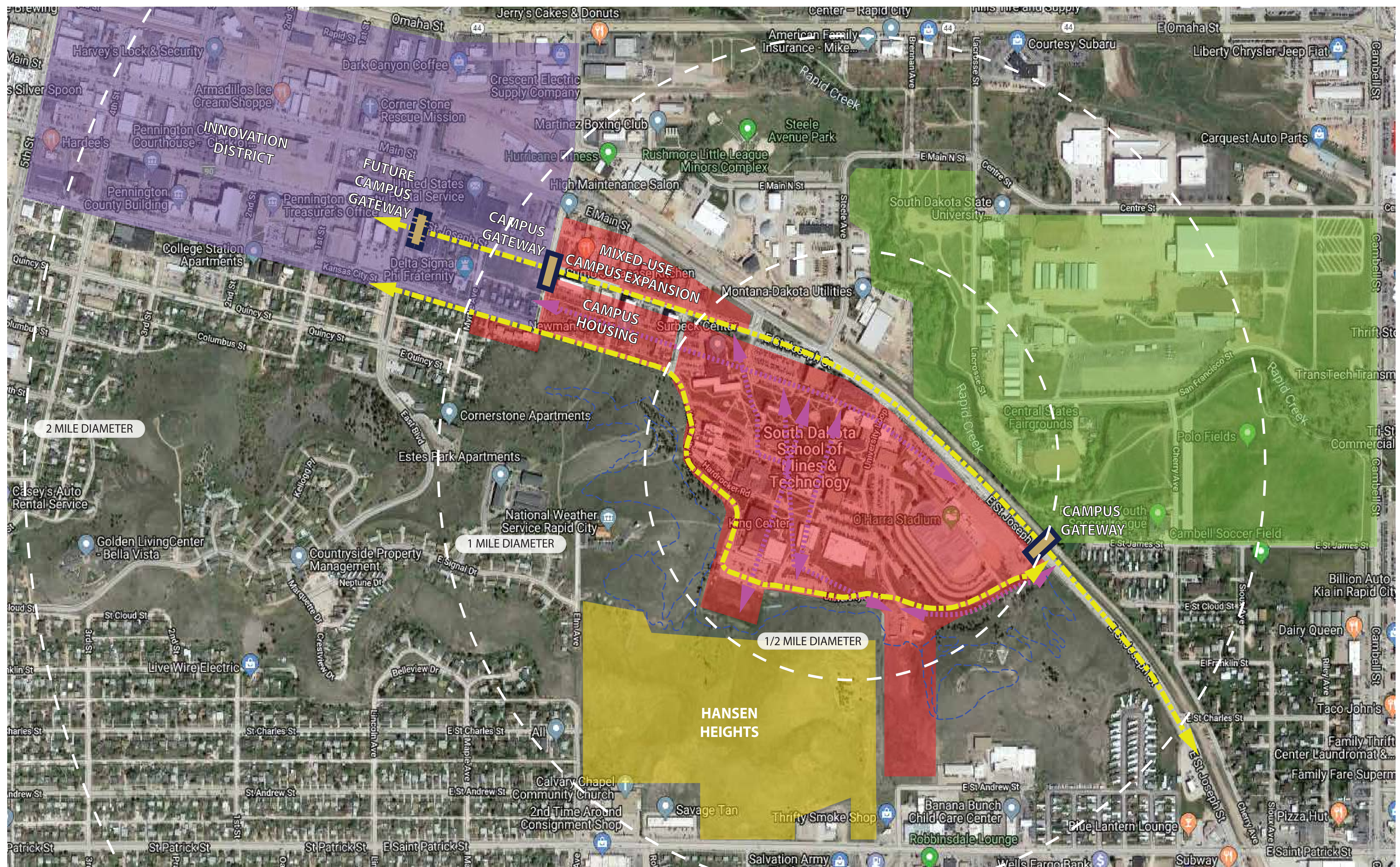
UPDATE

2023

CAMPUS STANDARDS



CONTEXT MAP



SOUTH DAKOTA MINES CAMPUS MASTER PLAN



SOUTH DAKOTA MINES

UPDATE

2023